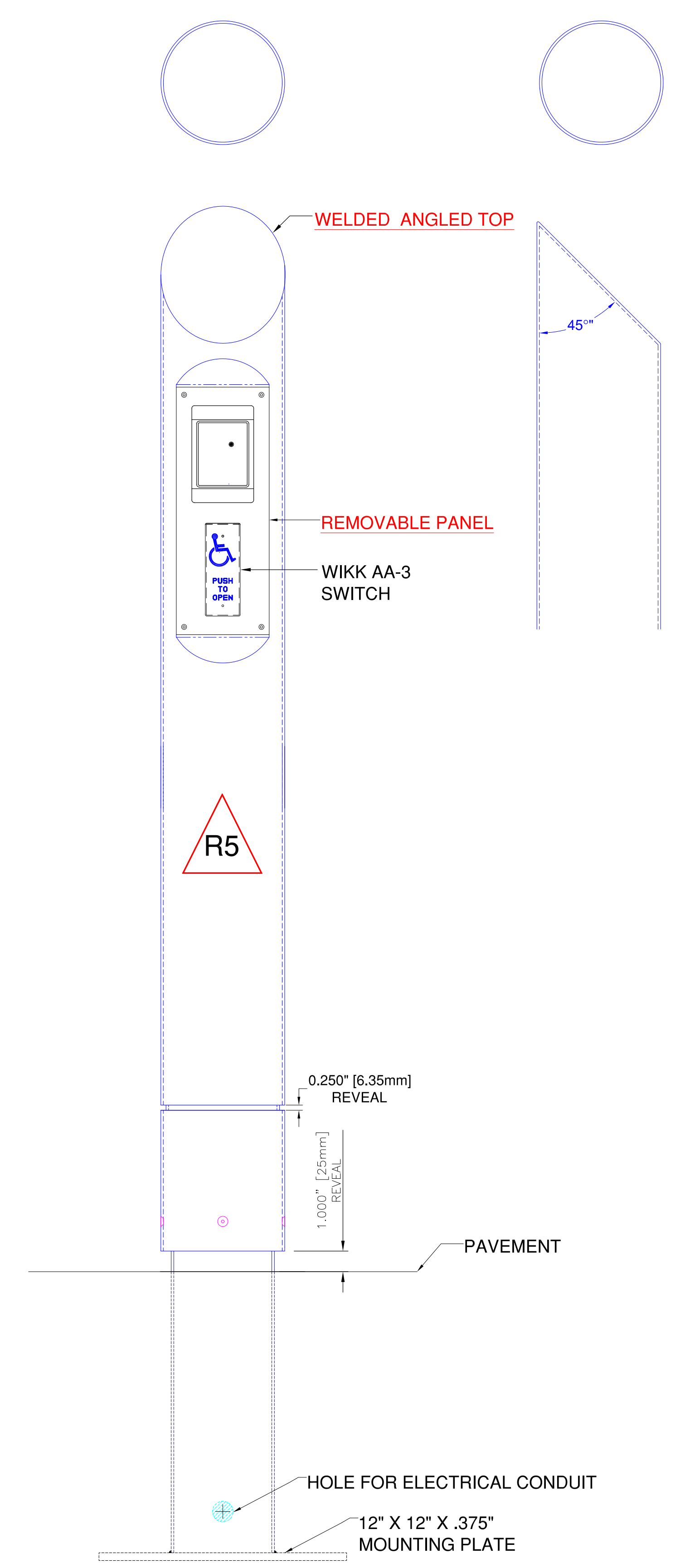
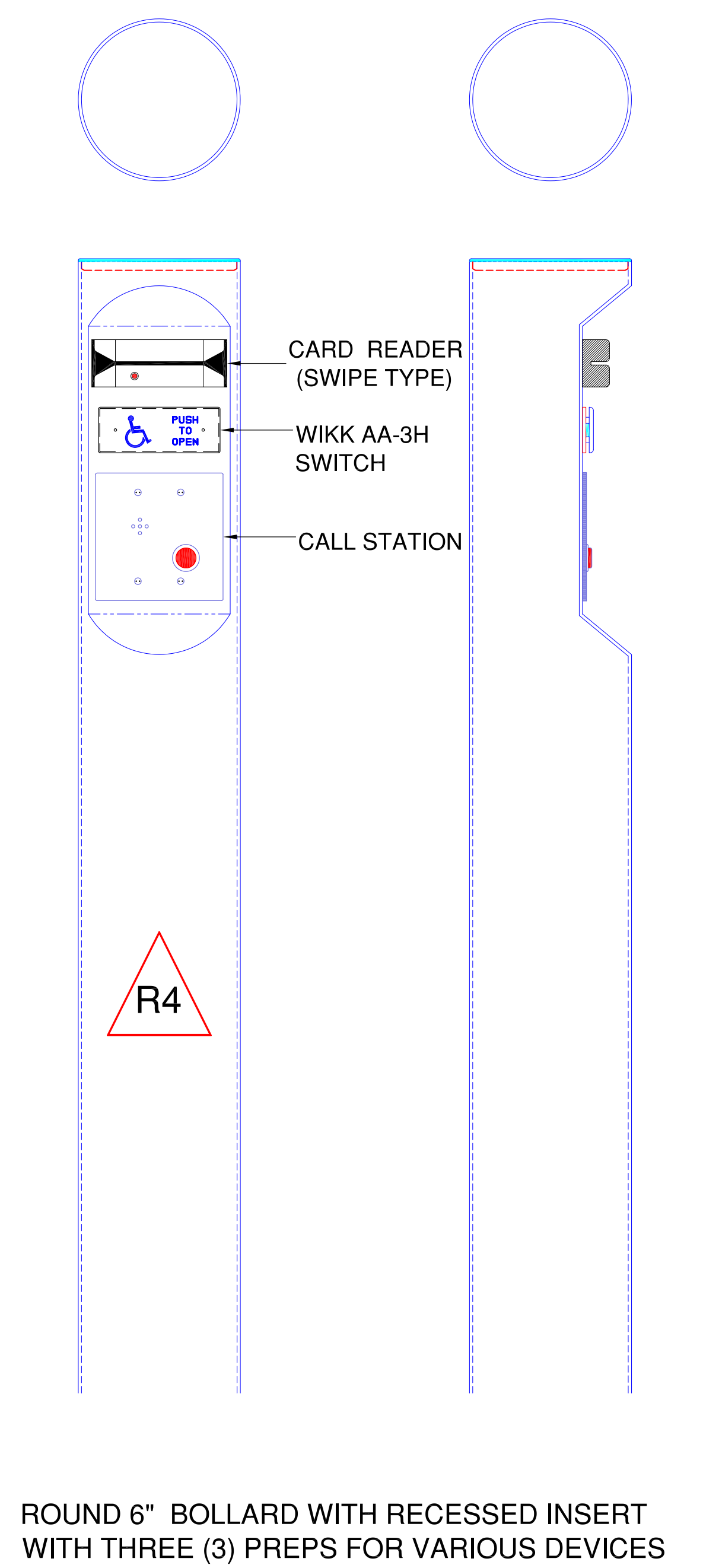
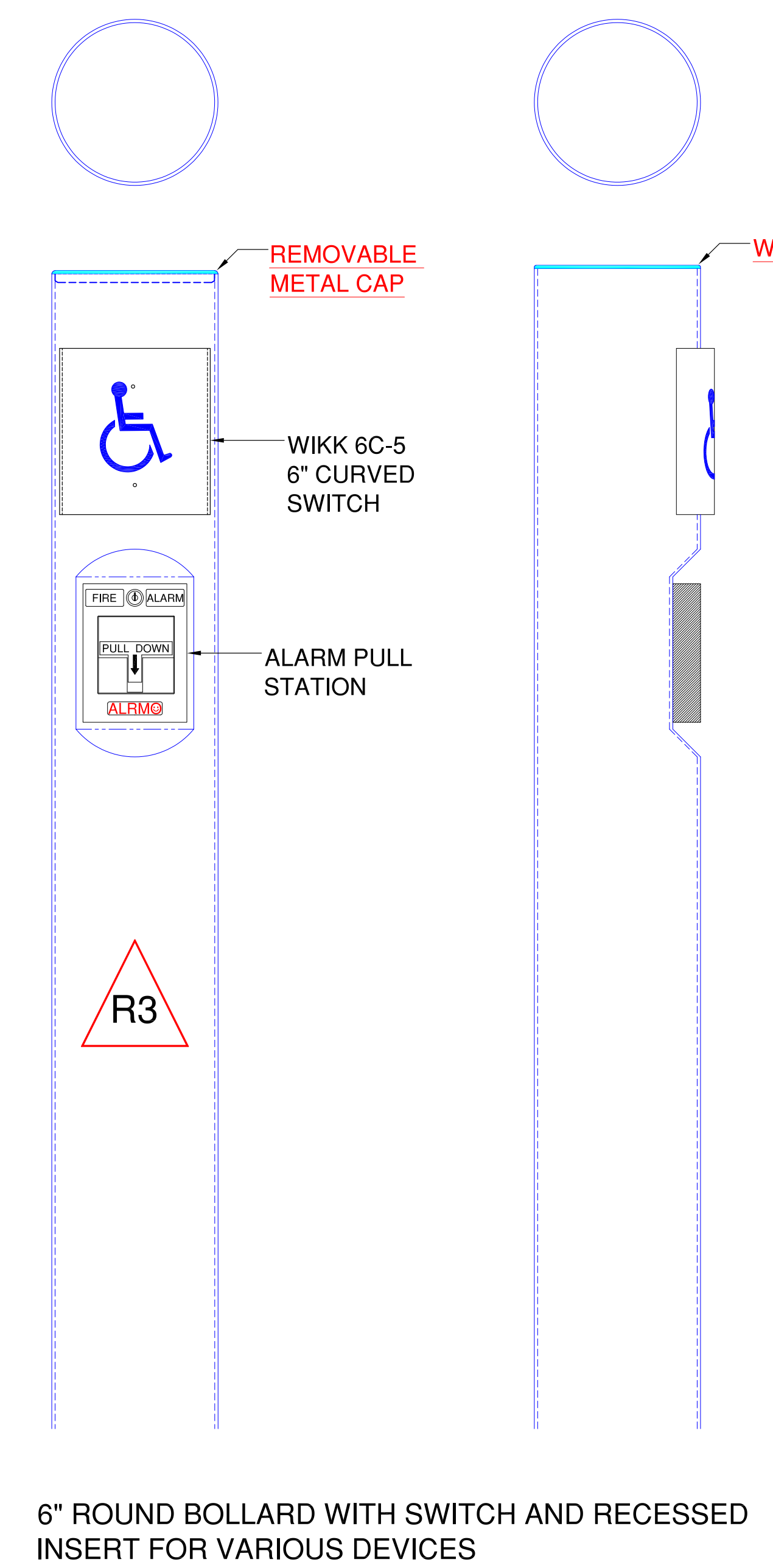
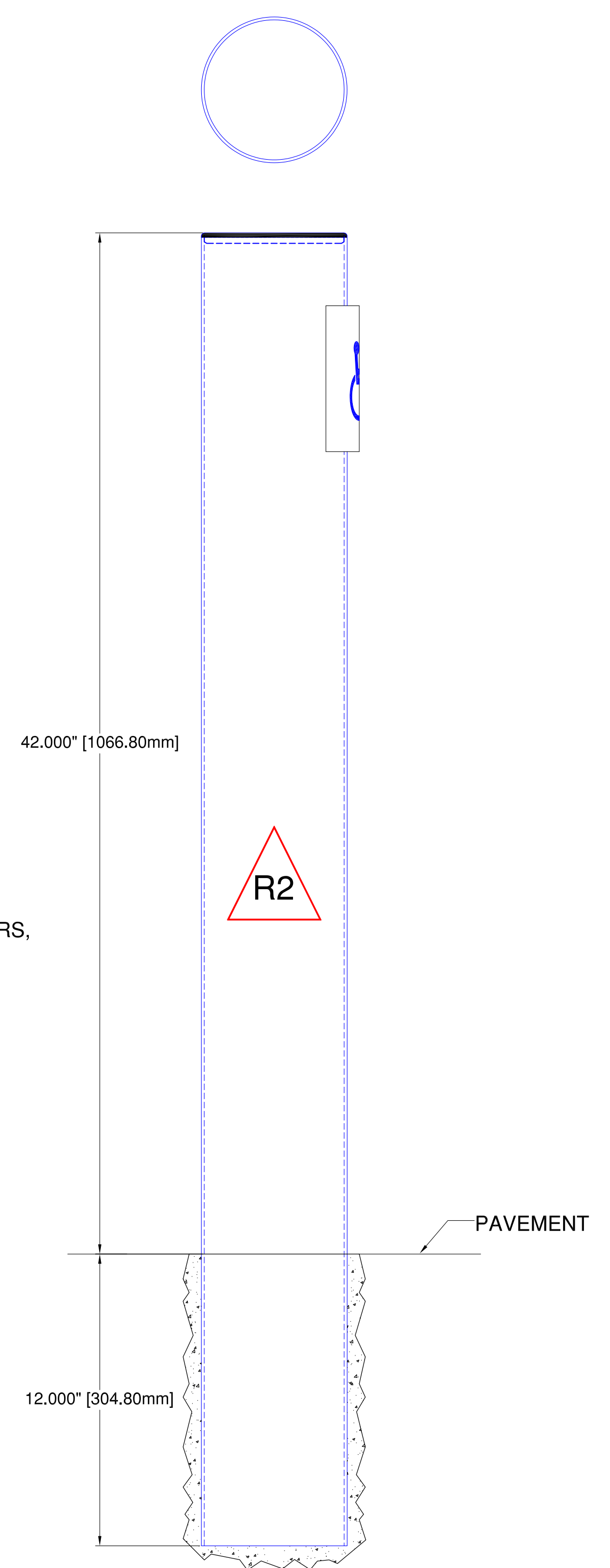


STANDARD 6" X 42" ROUND BOLLARD WITH WIKK 6C-5 CURVED SWITCH AT 36" FROM FINISHED FLOOR AND REMOVABLE RF TRANSPARENT BLACK CAP  
BPRSM

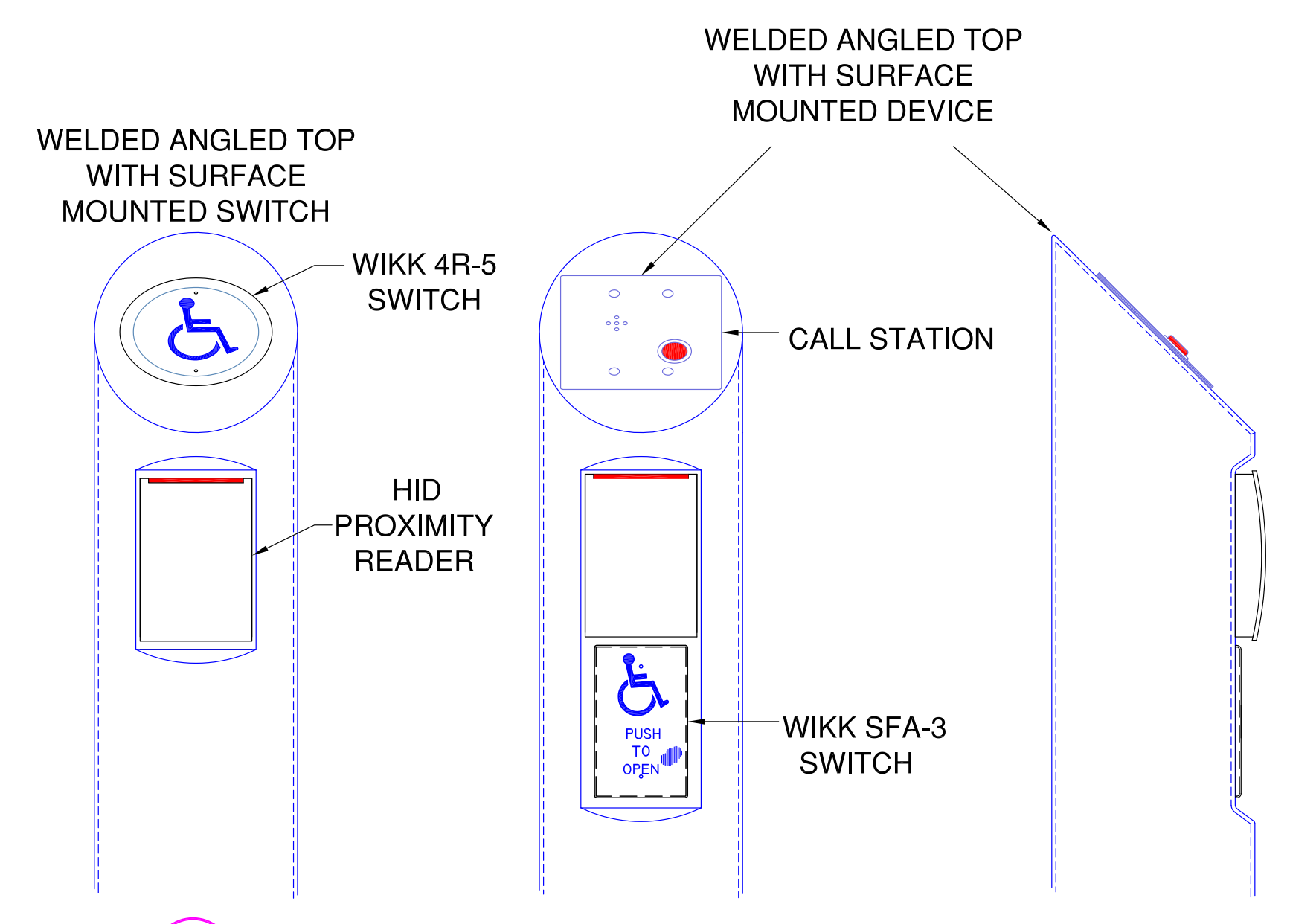


ROUND 6" INGROUND BOLLARD WITH REVEAL AND RECESSED REMOVABLE PANEL WITH SWITCH AND CARD READER

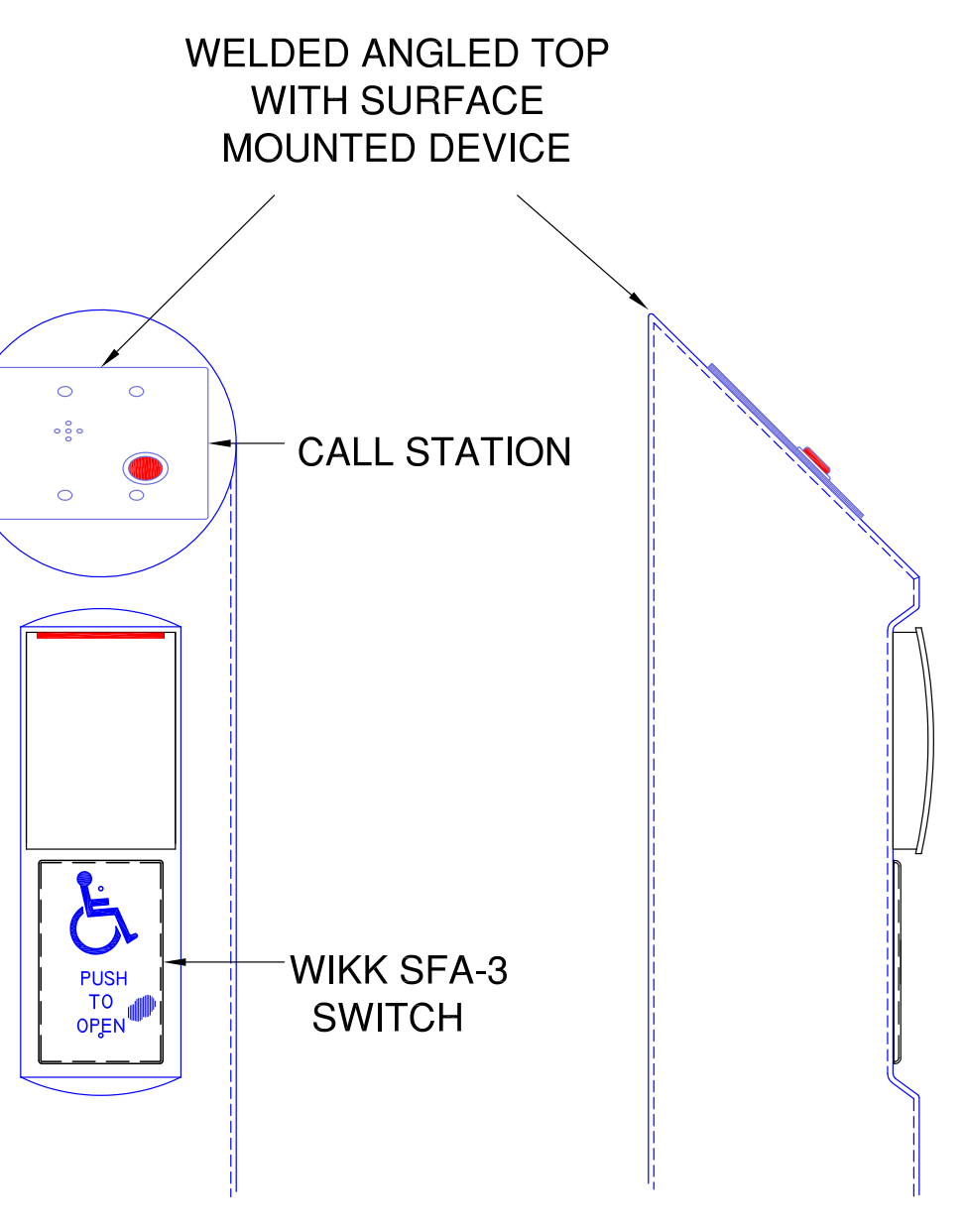
INGROUND OPTION AVAILABLE FOR ALL BOLLARDS

Examples shown are representative of, but not limited to, bollards that can be manufactured.

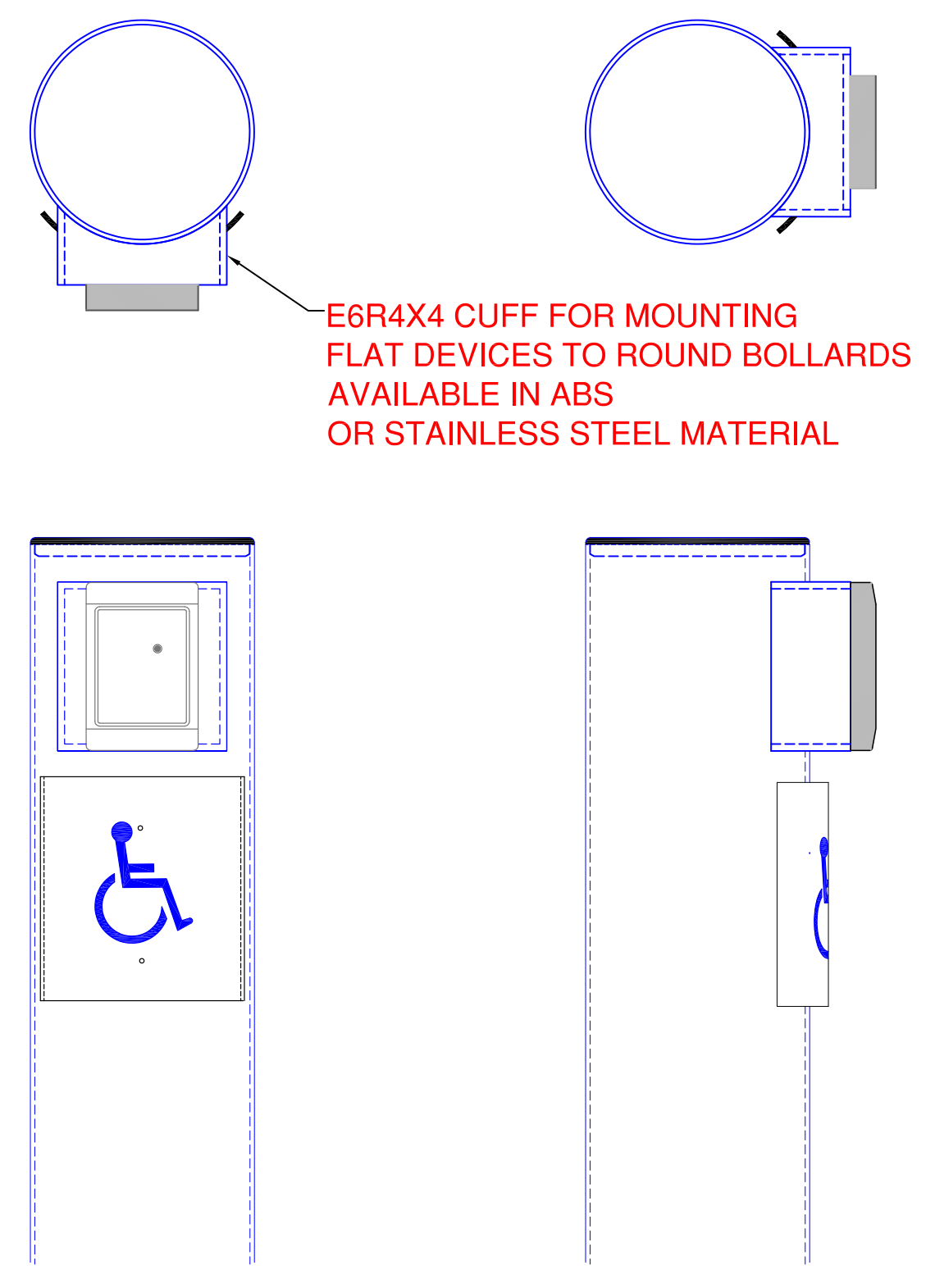
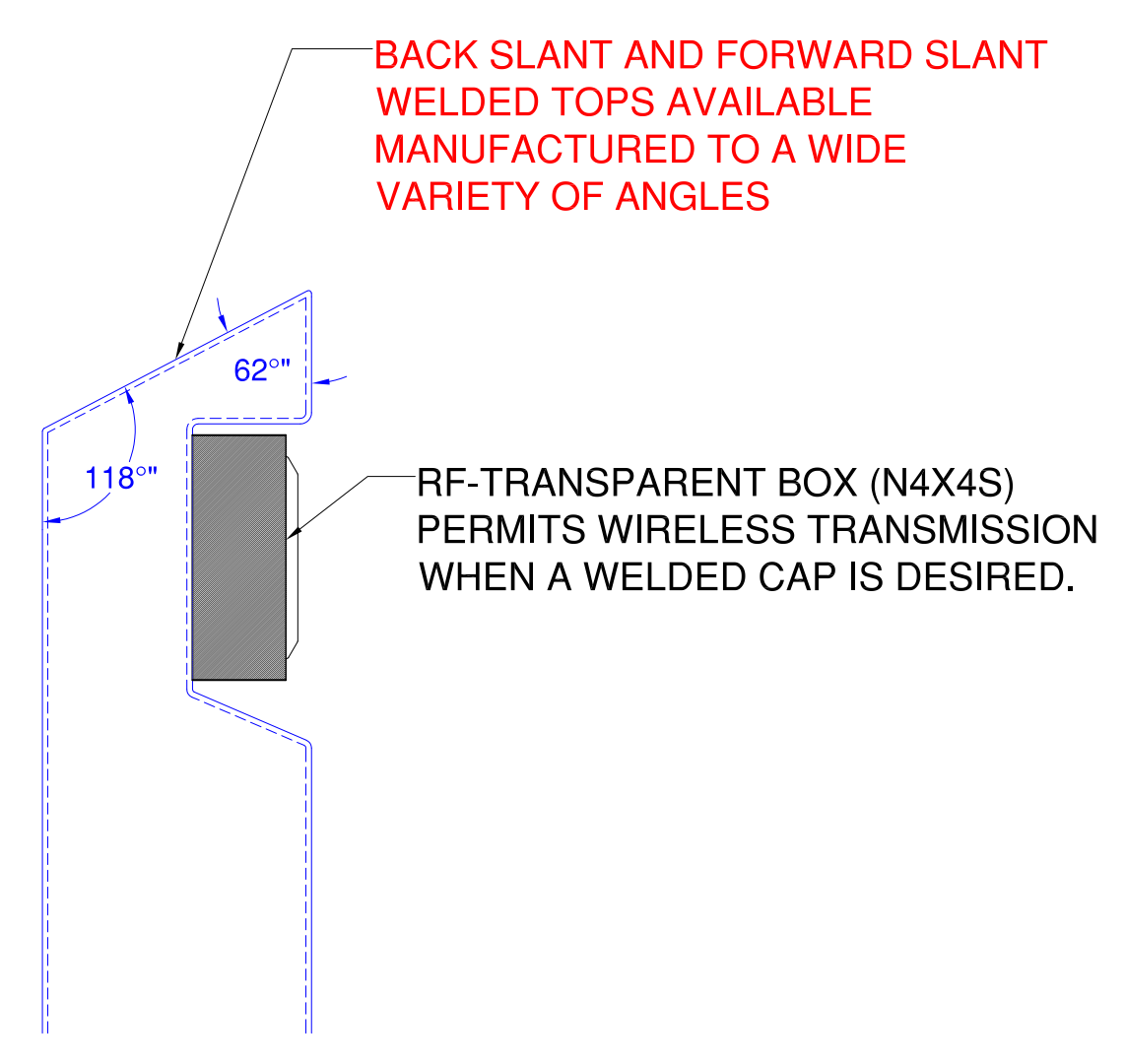
OTHER DESIGN OPTIONS



ANGLE CUT 6" BOLLARD WITH SWITCH AND PROXIMITY READER



ROUND BOLLARD POST WITH N4X4S SURFACE MOUNT BOX



6" ROUND WITH WELDED DOME CAP OPTION AND ANGLED INSERT AVAILABLE IN STAINLESS STEEL OR MILL ALUMINUM.

**MATERIAL AND FINISH OPTIONS FOR BOLLARDS**  
#304 STAINLESS STEEL (#316 OPTIONAL)  
US32 MIRROR  
US32D SATIN  
AND  
MILL ALUMINUM FOR PAINTED FINISH BY WIKK OR OTHERS

NON-PRODUCTION DRAWING. NOT FOR FABRICATION.  
ALL BOLLARD IMAGES ARE FOR EXAMPLE ONLY AND ARE THE PROPERTY OF WIKK INDUSTRIES AND MAY NOT BE REPRODUCED WITHOUT PERMISSION



**WIKK**  
Industries, Inc.  
6169 Industrial Court  
Greendale, WI 53129-0167  
Phone: 414-421-9490  
Fax: 414-421-3158

Exact product dimensions and features may vary slightly from examples shown above.